

Rasco Industries, Inc.  
 5310 Shoreline Drive  
 Mound, MN 55364  
 United States  
 Phone: 800-537-3802  
 Fax: 952-283-1261  
 Sales@Rascoind.com



**RASCO**  
 INDUSTRIES, INC.  
 BUGBLOCKER.COM

P.O. NO: \_\_\_\_\_

DATE REQUIRED: \_\_\_\_\_

TAG: \_\_\_\_\_

SPECIAL INSTRUCTIONS: \_\_\_\_\_

QUANTITY: \_\_\_\_\_

PREPARED BY: \_\_\_\_\_

EMAIL: \_\_\_\_\_

COMPANY: \_\_\_\_\_

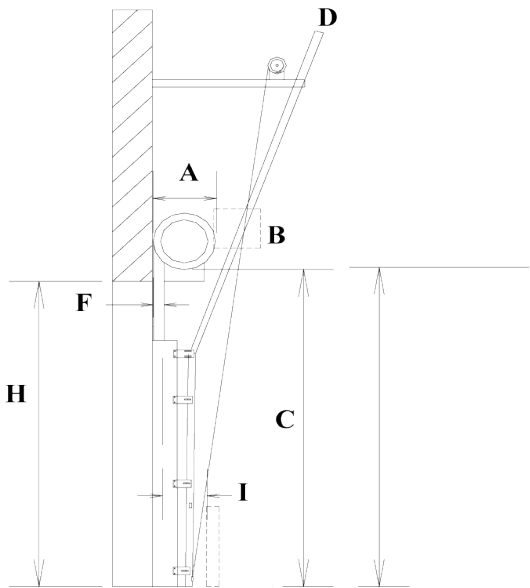
ADDRESS: \_\_\_\_\_

PHONE: \_\_\_\_\_

FAX: \_\_\_\_\_

SHIP TO ZIP: \_\_\_\_\_

**Bug Blocker® Screen Door - Vertical Lift / Behind Rolling Shorter than Opening**



- A) Distance to back of roll \_\_\_\_\_ in
- B) Any interference from motor operator?  y  n
- C) Distance from floor to bottom of roll \_\_\_\_\_ ft \_\_\_\_\_ in
- D) Rasco door Track Width  2"  3"
- E) Rasco Door Height \_\_\_\_\_ ft \_\_\_\_\_ in  
(at least 2' less than Opening Height)
- F) Depth of existing guide \_\_\_\_\_ in
- G) Opening Width \_\_\_\_\_ ft \_\_\_\_\_ in
- H) Opening Height \_\_\_\_\_ ft \_\_\_\_\_ in
- I) Distance from bollards to existing guide \_\_\_\_\_ in
- J) Will Rasco door be motorized?  y  n
- K) If yes, is Rasco providing the operator?  y  n
- L) 12 Mesh   
 30 Mesh   
 Expanded Metal
- M) Guide Outside-to-Outside Distance (NOT the opening size) \_\_\_\_\_ ft \_\_\_\_\_ in

